

KRAEMER

"PF" TYPE DUST COLLECTORS

- A new dust collector with pulse cleaning 5" dia. polyester filter bags
- Filters are cleaned in sequence a row at a time continuously
- Sequencing timer is adjustable
- Pull through or push in

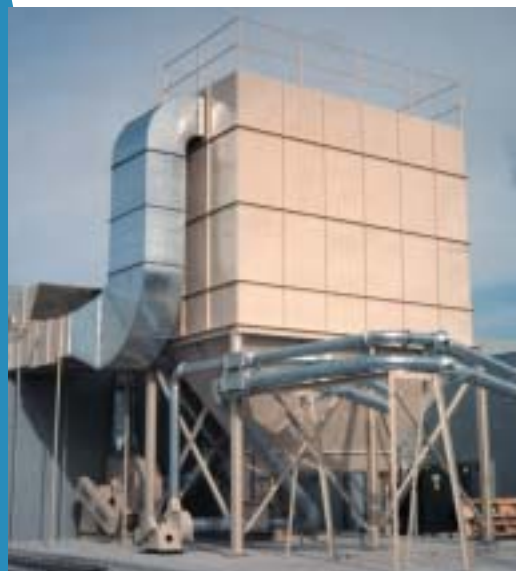
- Extractor fan with TEFC high efficiency motor and drives
- Polyester filters, cages and venturis
- Side inlet and material deflector
- Inlet back draft damper
- Sprinkler head in filter cabinet
- Top access panels to filter section
- Pulse valves, manifold and automatic pulse controller
- Explosion doors on top
- OSHA guards

PF 20, PF 30, PF 42

- Drums, connector sleeves and quick release clamps

PF 63 to PF 416

- Storage capacity in hopper on some models or continuous draw out system
- Heavy duty slide gate, 42" x 42"
- Safety platform, railings and ladder(s)

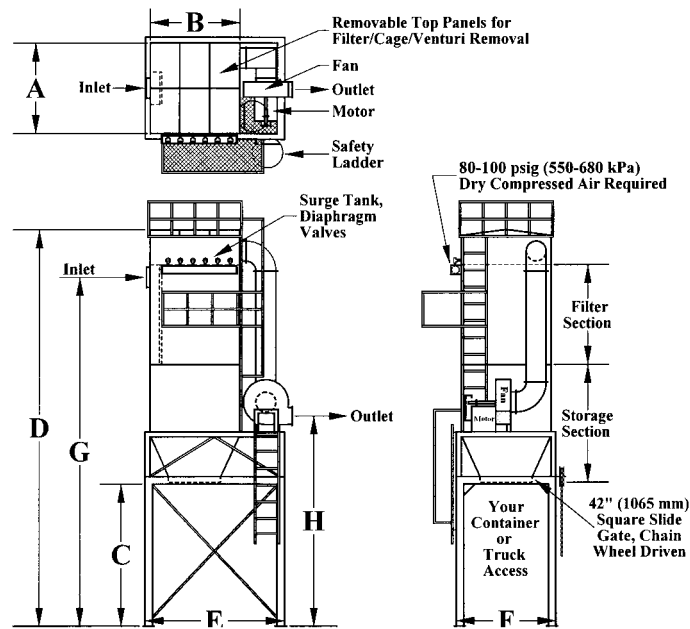


Options

- Rotary air lock in place of slide gate for continuous discharge
- Indicator for storage section if applicable
- Various filter materials: polyester or polyester mix (nomex available at an additional cost) etc.
- Choice of orientation for the following: Inlet, Outlet and Truck access
- Return air available (not included)
- Compressed air supply of 95-100 psi needed
- Screw conveyer assembly to air lock available (not included)
- OSHA guards



"PF" TYPE DUST COLLECTORS



TYPE	NOMINAL CFM	FAN HP	FILTER AREA	INLET DIA.	STORAGE (ft³)	WEIGHT APPROX. (lbs.)	A	B	C	D	E	F	G	H
PF 20	2300	7 1/2	209	10	2 drums	1400	3'-6"	3'-0"	3'-6"	13'-0"	5'-6"	4'-0"	11'-0"	4'-4"
PF 30	3300	10	314	12	2 drums	2000	4'-0"	4'-0"	3'-6"	13'-0"	7'-0"	4'-6"	10'-10"	4'-6"
PF 42	4700	15	440	14	2 drums	2600	5'-6"	5'-0"	3'-6"	13'-0"	8'-0"	6'-0"	10'-8"	4'-4"
PF 63	6400	20	660	16	200	6200	6'-0"	6'-0"	10'-0"	26'-6"	9'-4"	6'-9"	24'-0"	14'-0"
PF 80	8000	25	837	18	300	8000	7'-0"	7'-0"	10'-0"	27'-0"	10'-8"	7'-9"	24'-0"	14'-0"
PF 96	10000	30	1005	20	500	9000	8'-0"	8'-0"	10'-0"	28'-0"	11'-10"	8'-9"	25'-0"	15'-3"
PF 126	13000	40	1319	22	500	10000	9'-0"	9'-0"	10'-0"	29'-6"	12'-4"	9'-9"	25'-0"	16'-3"
PF 160	16000	50	1675	24	700	12000	10'-0"	10'-0"	11'-0"	31'-6"	14'-8"	10'-9"	27'-0"	18'-4"
PF 192	19000	60	2010	26	800	14000	10'-0"	12'-0"	11'-0"	32'-6"	17'-0"	10'-9"	28'-0"	19'-3"
PF 224	23000	75	2345	30	1000	17000	10'-0"	14'-0"	11'-0"	33'-6"	19'-8"	10'-9"	29'-0"	20'-5"
PF 288	29000	100	3015	34	1000	19000	10'-0"	15'-0"	12'-0"	33'-0"	15'-9"	10'-9"	28'-0"	*
PF 352	35000	125	3685	38	1000	21000	10'-0"	16'-0"	12'-0"	33'-0"	16'-9"	10'-9"	27'-6"	*
PF 416	42000	150	4355	42	1200	25000	10'-0"	18'-0"	12'-0"	33'-0"	18'-9"	10'-9"	27'-0"	*

Drum Storage and No Ladders or Platforms for PF 20, PF 30 and PF 42

* Fan and Motor Ground Mounted

General Specifications

- Free standing
- Structural frame steel construction
- Weatherproof
- Prime and finish painted
- Motors – TEFC, high efficiency
- Top filter/cage/venturi removal
- Polyester filters, 5" Ø x 96" long, (127 mm x 2438 mm)
- Safety platform, railings and ladder(s)
- Sprinkler connection

Arrangement 1 – Square Slide Gate, 42" (1065 mm) as shown

Arrangement 2 – Storage Drums (contact factory for details)

Arrangement 3 – Rotary Air Lock (contact factory for details)

Arrangement 4 – Rotary Air Lock with screw conveyor

Match different fan CFM and HP (m³/hr and kw) with filter area to give the required air to cloth ratio for specific dusts

note:

- Listed dimensions are for reference only
- Certified correct drawing will be issued before construction
- We reserve the right to make technical improvements without prior notice



KRAEMER TOOL & MFG. CO. LTD.

75 Devon Road, Brampton, Ontario Canada L6T 5A4 (905) 458-0400

2316 Delaware Avenue, Po Box 344, Buffalo, New York, USA 14216

1-800-443-6443 Fax: 1-888-565-9999

www.kraemertool.com